

THE FUTURE VISION of 2020

SHAPING THE NEXT WAVE OF MARINE
TIME DIGITAL TRANSFORMATION

PRESENTED BY
SAMUEL NG

CO-FOUNDER
IPO SG



DIGITALIZATION

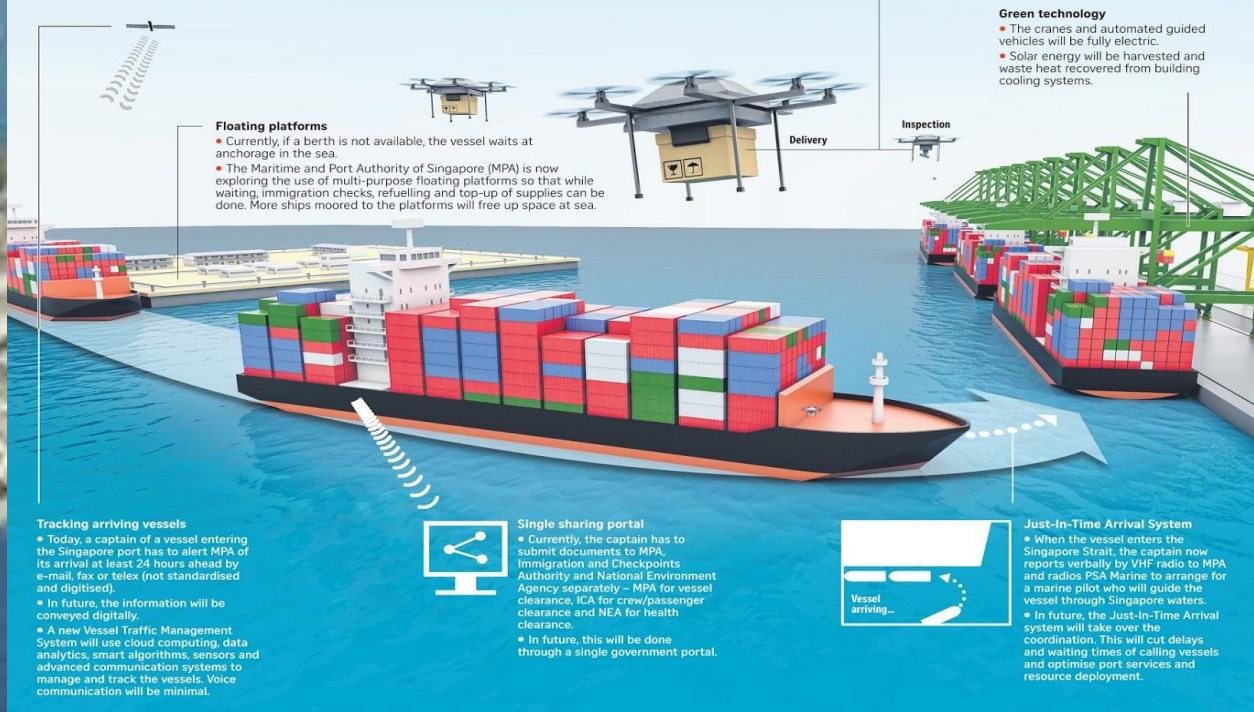
- **WHAT IS DIGITALIZATION?**
- **WHAT DOES IT MEAN FOR MY ORGANIZATION?**
- **WHAT ARE BEST PRACTICE EXAMPLES APPLIED TO MARITIME INDUSTRIES?**
- **HOW CAN AI BE USED IN LOGISTICS TO REINVENT BACK OFFICE, OPERATIONAL, AND CUSTOMER-FACING ACTIVITIES?**

Digital Future for Maritime



FUTURE PORT

The Tuas mega port, slated to open in phases from 2021, will incorporate smart and green technologies into its operations. Some of these will be tested at the MPA Living Lab. The Straits Times looks at the journey of a container through the port of the future.

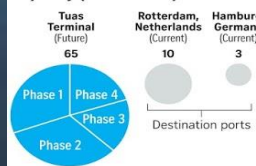


COMPARISON OF AUTOMATED TERMINAL OPERATIONS

Tuas Terminal

- Trans-shipment port that is many times larger than the ones in Europe.
- More complex to automate a trans-shipment container terminal of this scale than a destination port.

Capacity (million TEUs):



The port will occupy 1,339ha of land – about the size of two Ang Mo Kio New Towns

Amount of land to be reclaimed 1,085ha

First set of berths ready by 2021

TUAS TERMINAL FACTS AND FIGURES

| Phase | Area (ha) | Start of operations | Cargo handling capacity (TEUs, million)* |
|-------|-----------|---------------------|--|
| 1 | 414 | Early 2020s | 20 |
| 2 | 405 | Late 2020s | 21 |
| 3 | 260 | Early 2030s | 11 |
| 4 | 260 | Mid-2030s | 13 |

NOTE: *Twenty-foot equivalent units. Refers to a common international standardised 20-foot-long (6.1m) container type.

\$1 billion

Approximate cost savings in reclamation fill material by re-using dredged and excavated materials from land construction projects such as rail infrastructure projects, for reclamation of Tuas Phase 1.

Feasibility studies are being done on the construction of an elevated area 42m above ground – overlooking port operations – to house warehousing, distribution and logistics operations, as well as possibly cafes, retail stores and other amenities.

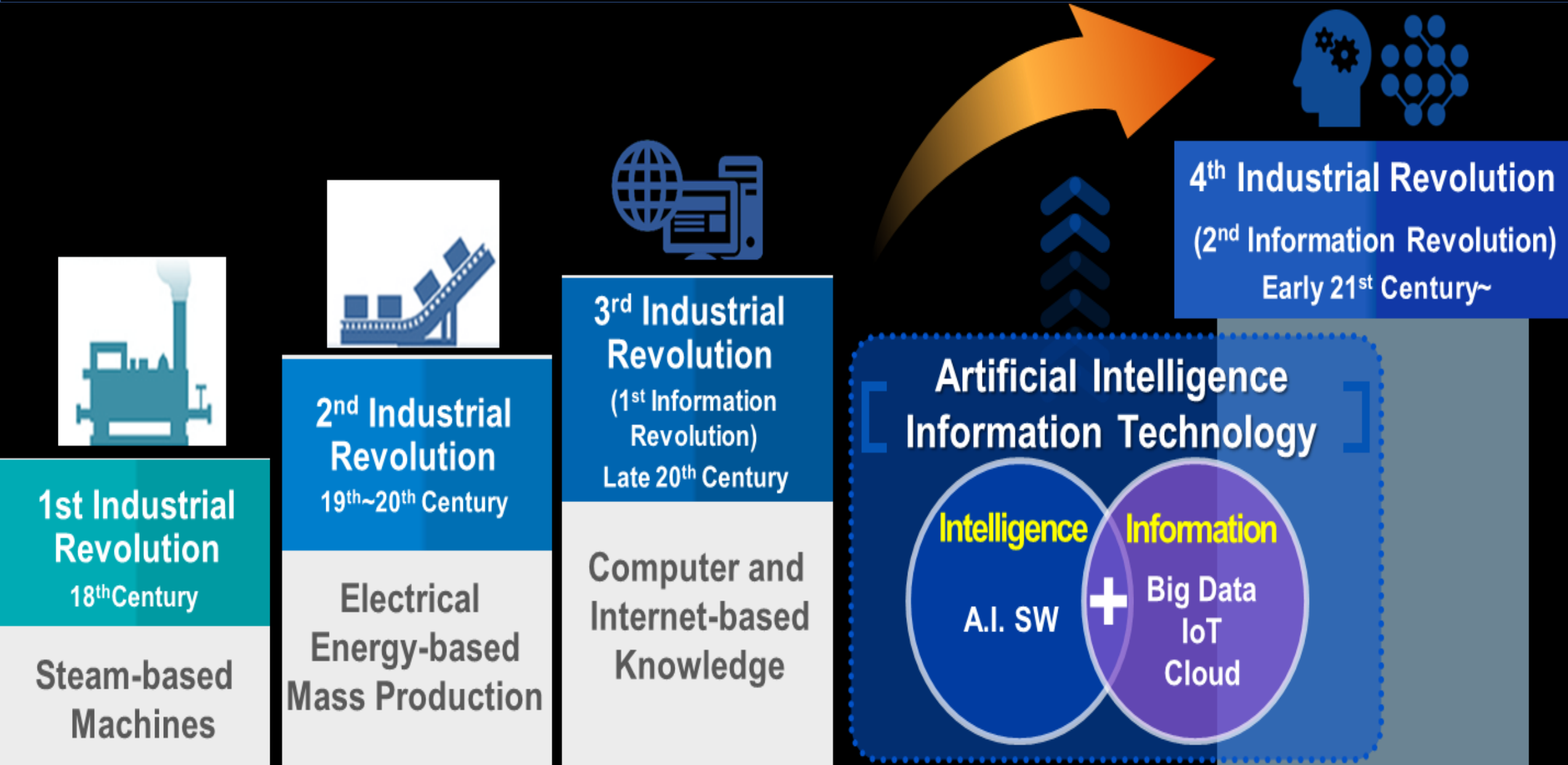
2,300 out of 2,800 coral colonies

around Sultan Shoal lighthouse – in the vicinity of the proposed reclamation works – have been relocated to the Southern Islands successfully.

\$6 million

Cost of the coral relocation project

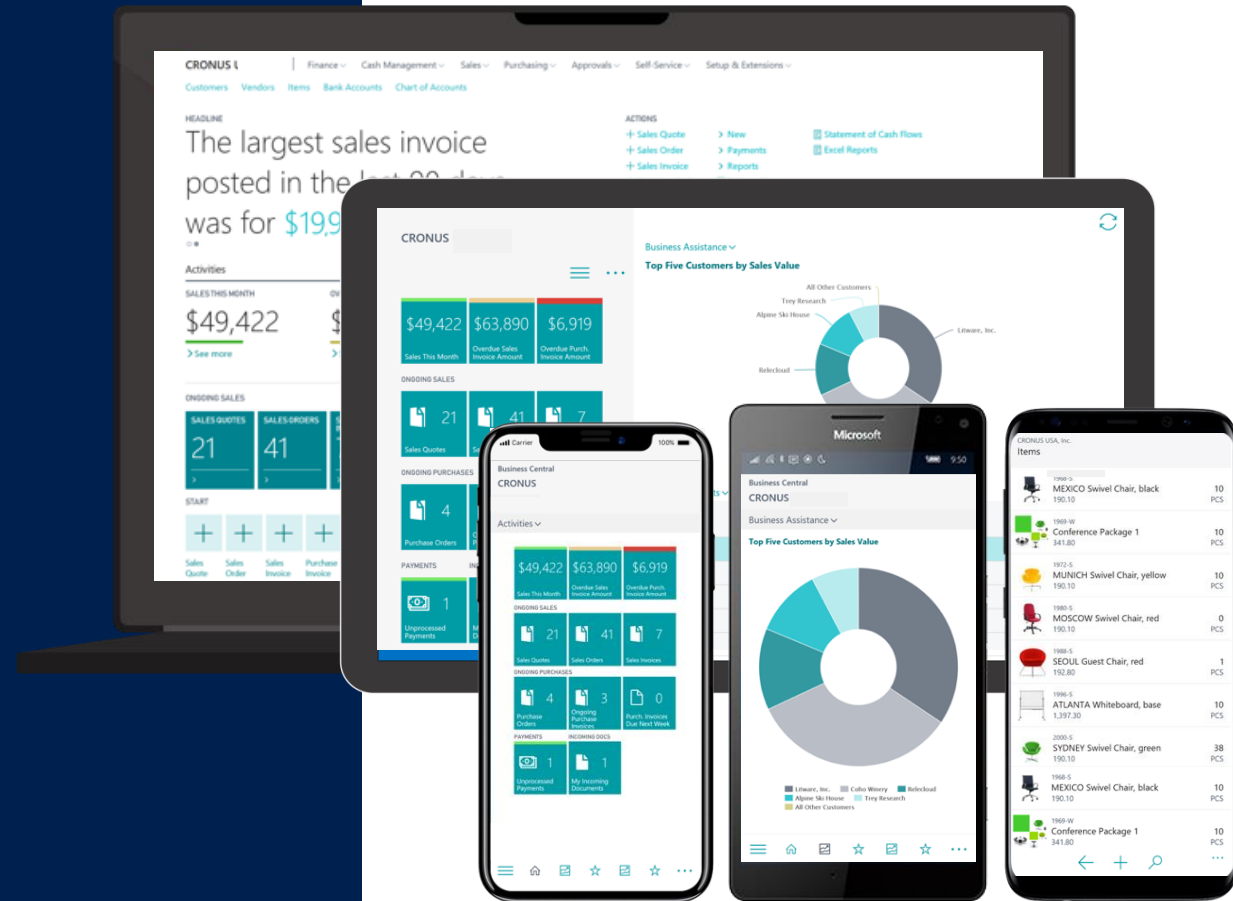
Future of Next Generation Solution



Microsoft Wave of Digitalization

Microsoft Digitalization Wave

- Business Central
- Flow
- Power App
- Power BI

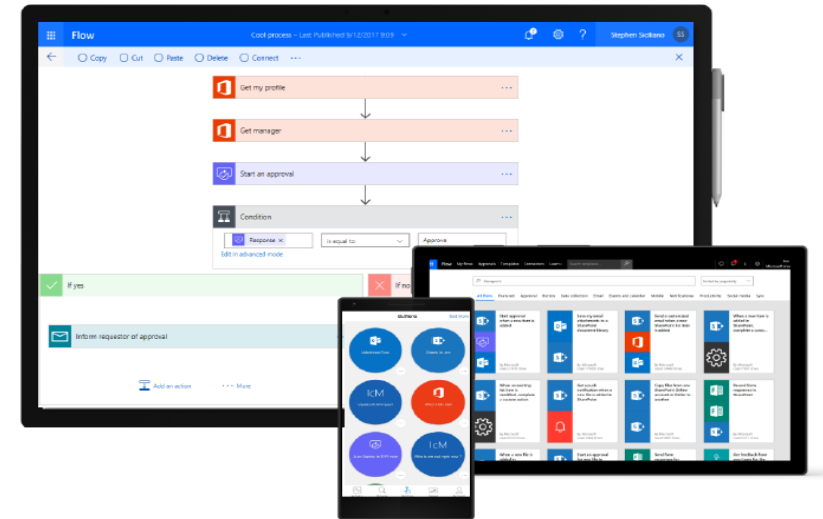


Microsoft Wave of Digitalization

Microsoft Flow

Automate and integrate business processes with Microsoft Flow

- Automate and model business processes across your apps and services
- From simple automations to advanced scenarios with branches, loops, and more
- Trigger actions, grant approvals, and get notifications right where you work



Enterprise-grade

Cloud and on-premises connectivity

Pro-developer extensibility

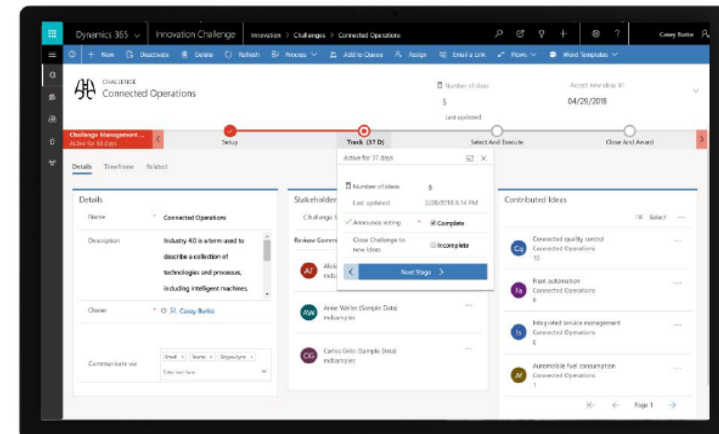


Microsoft Wave of Digitalization

Power App

Put all your data to work with
Common Data Service for Apps

- Jumpstart apps using a standardized data model with business logic, security and integration built-in
- Extend to your own needs and integrate across your apps and services
- Seamless Dynamics 365, Office 365, and Azure integration, augmented with data from industry partners



Enterprise-grade

Cloud and on-premises connectivity

Pro-developer extensibility

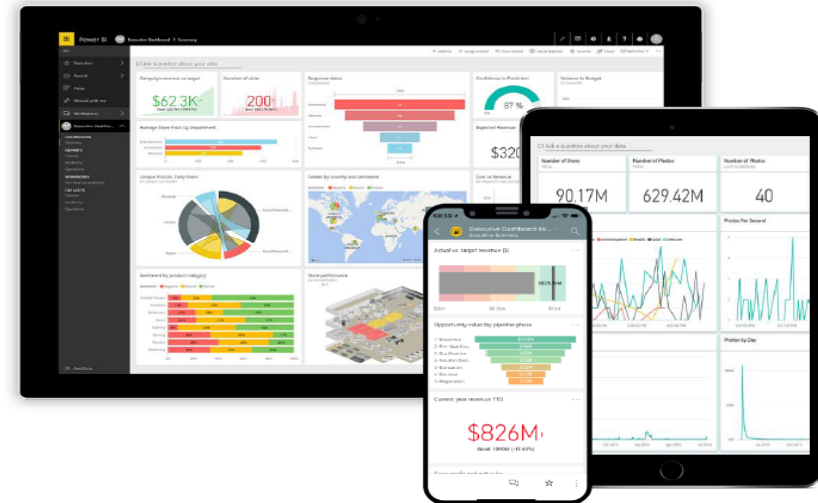


Microsoft Wave of Digitalization

Power BI

Gain insights from your data regardless of where it lives with Power BI

- Connect to all your data and get a consolidated view across your business through a single pane of glass
- Create ad-hoc analysis, live dashboards and interactive reports that are easy to consume on the web and across mobile devices
- Build smart apps by infusing insights from your data and drive action with the power of the Business Application Platform



Enterprise-grade

Cloud and on-premises connectivity

Pro-developer extensibility

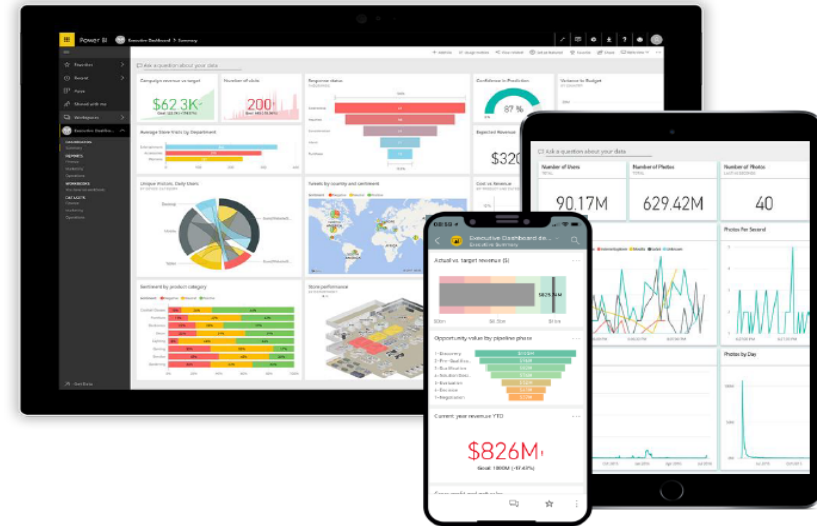


Microsoft Wave of Digitalization

Power BI

Gain insights from your data regardless of where it lives with Power BI

- Connect to all your data and get a consolidated view across your business through a single pane of glass
- Create ad-hoc analysis, live dashboards and interactive reports that are easy to consume on the web and across mobile devices
- Build smart apps by infusing insights from your data and drive action with the power of the Business Application Platform



Enterprise-grade

Cloud and on-premises connectivity

Pro-developer extensibility

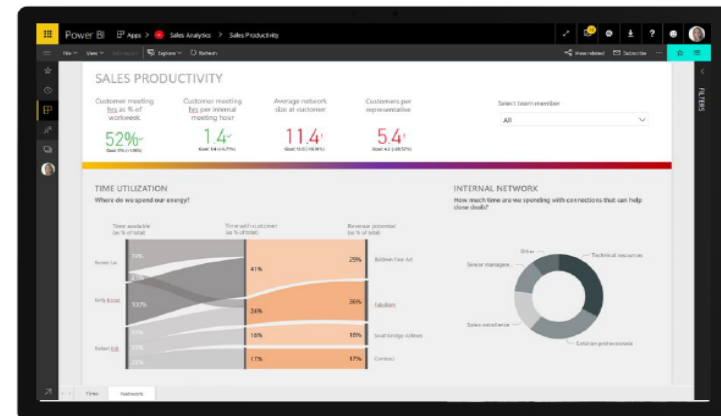


Microsoft Wave of Digitalization

Power BI - AI

Accelerate insights with Common Data Service for Analytics capability in Power BI

- Unify data and drive analytics with a standardized schema built on the common data model
- Benefit from out-of-the-box insights that are extensible to meet your unique business needs
- Integrate data warehousing processes with business analytics in Power BI and easily extend to Azure



Enterprise-grade

Cloud and on-premises connectivity

Pro-developer extensibility



Digital Transformation - Power



What is AI? – To sense, comprehend and act

Sense



Computer vision and audio processing, for example are able to actively perceive the world around them by acquiring and processing images, sounds and speech. The use of facial recognition at border control kiosks is one practical example of how it can improve productivity.

Comprehend



Natural language processing and inference engines can enable AI systems to analyse and understand the information collected. This technology is used to power the language translation feature of search engine results

Act



An AI system can take action through technologies such as expert systems and inference engines or undertake actions in the physical world. Auto-pilot features and assisted-braking capabilities in cars are examples of this

Emerging AI technologies

AI
Technologies

Illustrative
Solutions

Computer Vision

Audio Processing



Virtual Agents



Identity Analytics

Natural Language Processing

Knowledge Representation



Cognitive Robotics



Speech Analytics

Machine Learning

Expert Systems



Recommendation Systems



Data Visualization

The RISE of AI (PART 1)

Evolution of AI:1950-present

Term "Artificial Intelligence" coined at Dartmouth

 1956

First "AI-Winter"- The Lighthill report

 1974-1980

Second " AI-Winter"- collapse of lisp machine market

 1987-1993

Google speech-to-search iPhone App

 2008

Google Brain developed, 75% accuracy identifying cats on YouTube

 2011/2012

China's Tianhe-2 Double World's Top Supercomputing Speed (33.86 petaflops)

 2013

Microsoft launched Rinna in July 2015. It has had regular conversations with 20% of Japan's population till date

 2015

Chins's Sunway TaihuLight Triples World's Top Supercomputing Speed (93petaflops)

 2016

SpaceX has its self landing rockets on a Cape Canaveral landing pad and on sea-going landing barges, respectively

 2017

 1950

Alan Turing creates "Turing Test" to determine machine's human ability

 1969

Stanford Research Institute creates Shaky, first robot with self-reasoning

 1980

Symbolics Lisp machines commercialized –AI renaissance

 1997

IBM Deep Blue defeats Garry Kasparov at Chess

 2011

IBM Watson defeats Ken Jennings on Jeopardy

 2012

Apple introduces Siri intelligent personal assistant

 2014

Facebook develops DeepFace near human accuracy
Microsoft's journey with chatbots started in May 2014 in China with Xiaoice

 2015

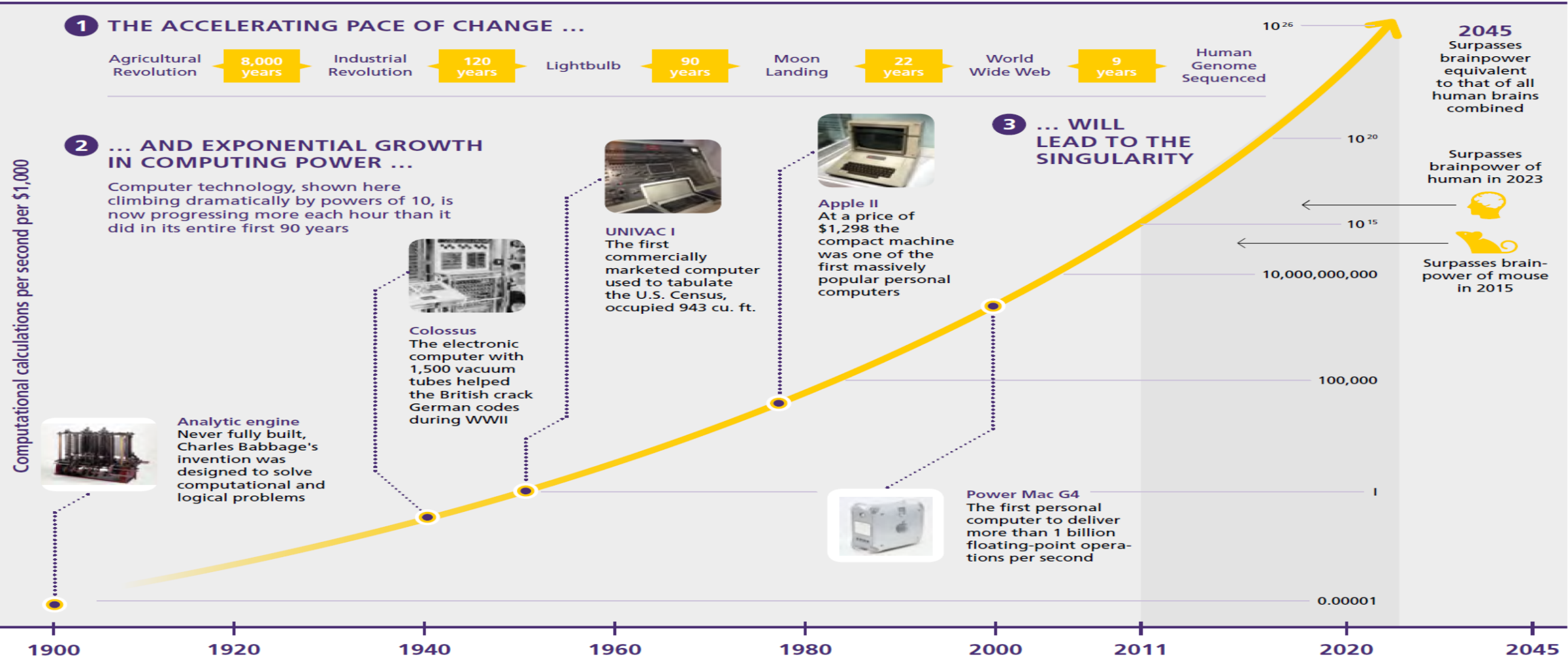
Google DeepMind's AlphaGo defeats Lee Sedol at Go
Google open-sources TensorFlow software library

 2016

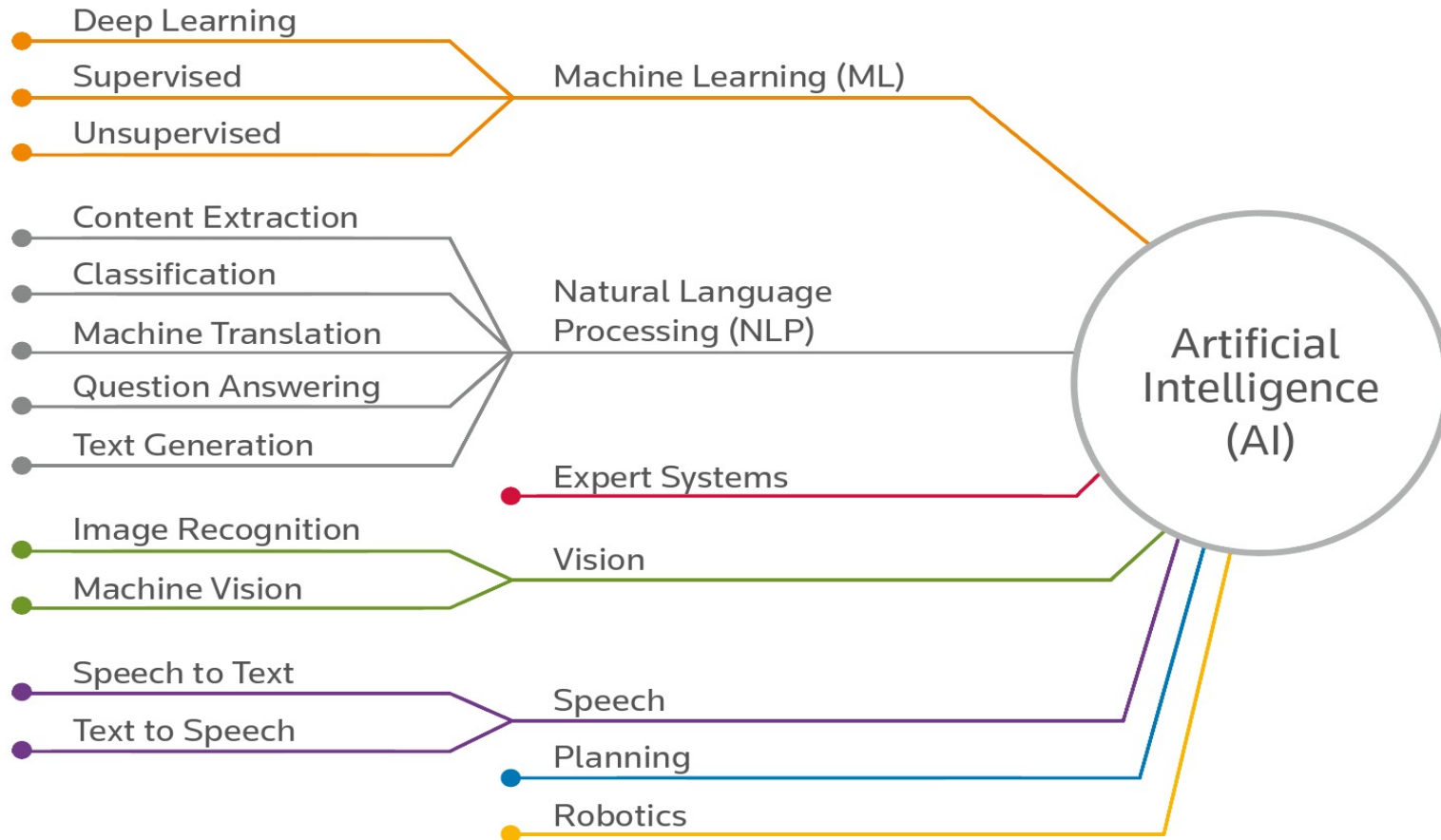
Uber pilots self driving car program in Pittsburgh, PA
Chins's Sunway TaihuLight Triples World's Top Supercomputing Speed (93petaflops)

Law of Accelerating Returns

LAW OF ACCELERATING RETURNS

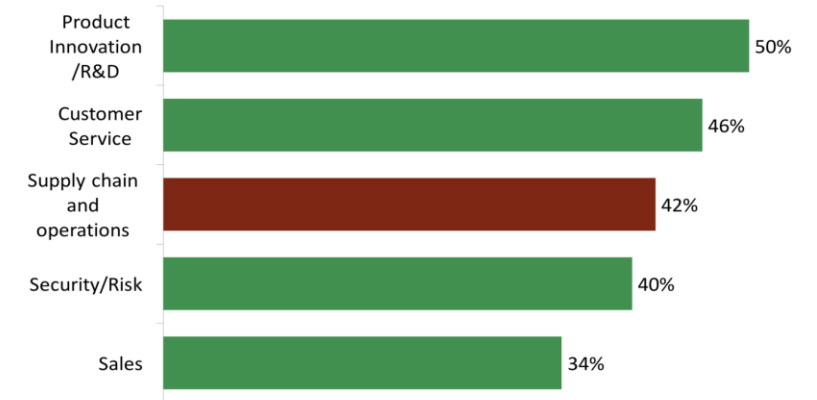


Artificial Intelligence Approach



Top Areas Where Businesses Are Driving Revenue From AI Investments

Q: Which part of your organization is driving revenue from AI capabilities today?

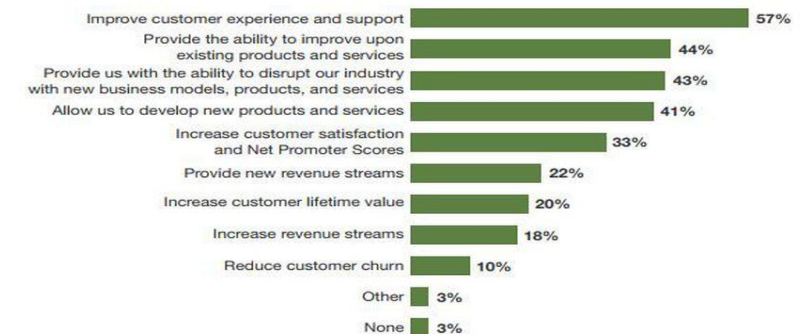


Source: Teradata, Vason Bourne, 2017, n=209 IT and business execs

BI INTELLIGENCE

FIGURE 2 Enterprises Believe The Benefits Of AI Will Be To Improve Customer Experience And Support

"What are the biggest strategic/growth benefits AI will contribute to your organization?"
(Please select up to three)



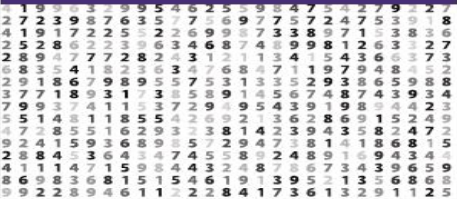
Base: 598 business and technology professionals

Source: Forrester's Q2 2016 Global State Of Artificial Intelligence Online Survey

The RISE of AI (Part 3)


DEEP LEARNING IN ACTION

1980s



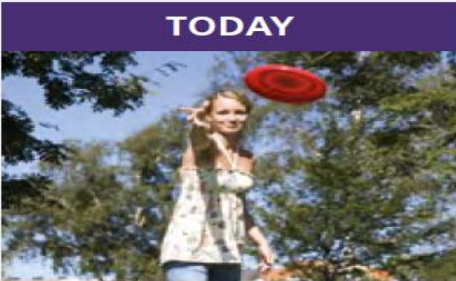
Scanned Digits

2012



Natural Photos

TODAY




A woman is throwing a frisbee in a park

Vision & Language Scene Recognition


The computer understands the picture and sees that 'a woman is throwing a frisbee in a park'

Classification




CAT

Classification + Localization




CAT

Object Detection



CAT, DOG, DUCK

Instance Segmentation



CAT, DOG, DUCK

Single Objects

Multiple Objects



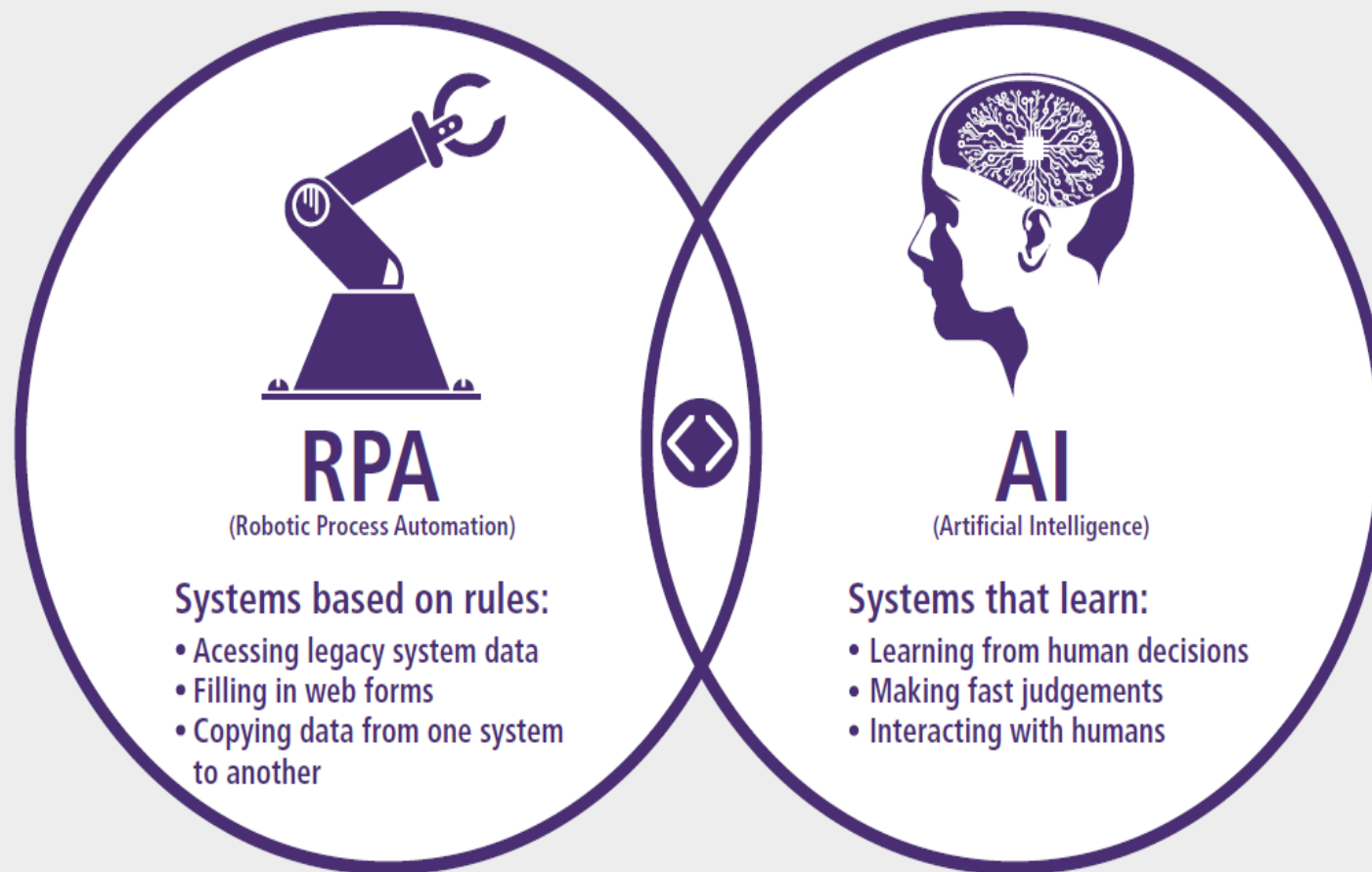
Microsoft Vision of 2020



- Build 2017: Workplace Safety Demonstration
- Vision 2020 of Microsoft in Maritime

Integration to your Suppliers and Customers Supply Chain

Maritime AI

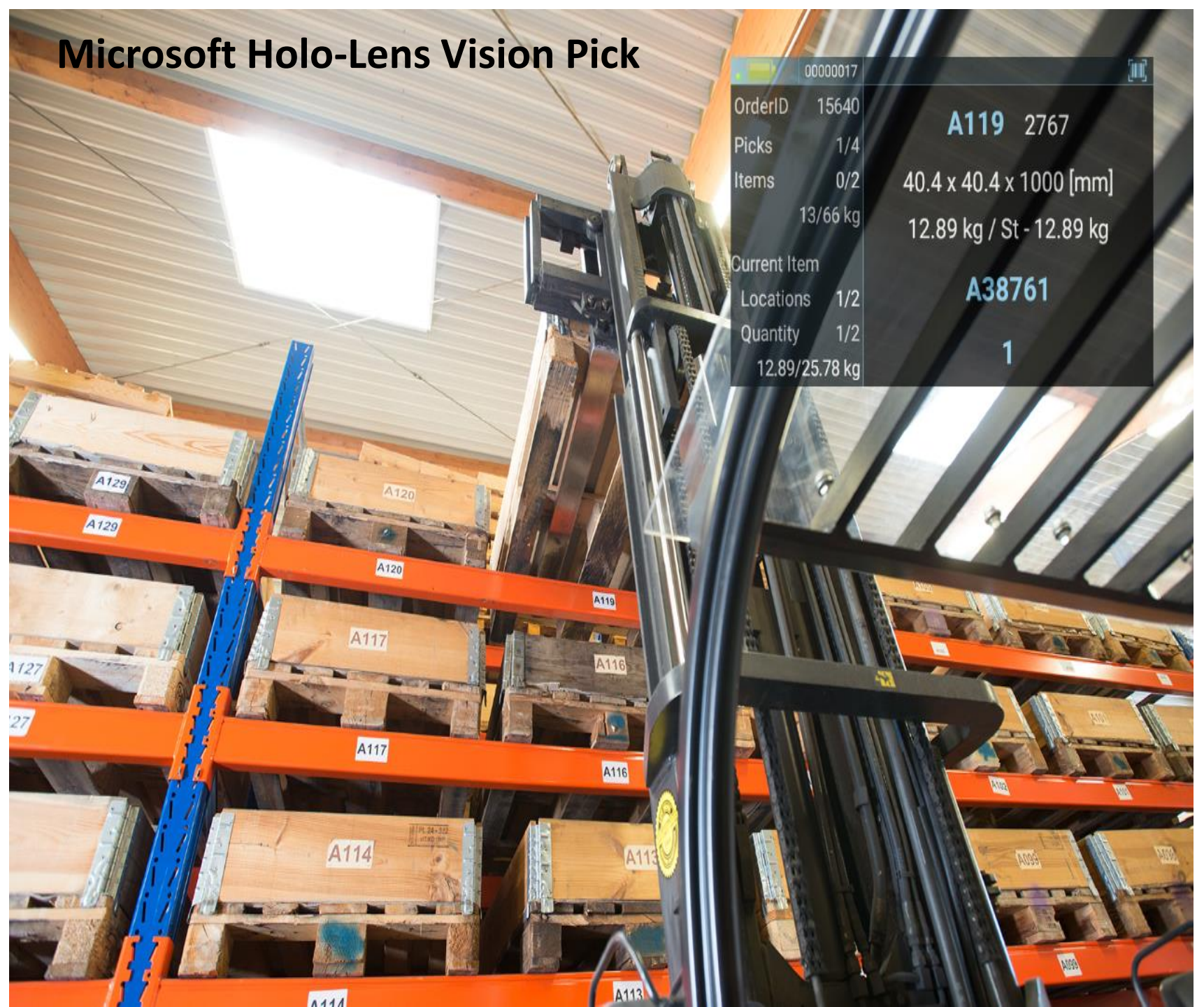


Bots automate easy tasks and make broad data sources accessible to AI.

AI learns to mimic and improve processes based on data handed over from RPA.

Maritime AI

Microsoft Holo-Lens Vision Pick



Applying Supply Chain Management



AGV- Laser Guided



AGV- Track Guided



ASRS



Carousel



Exoskeleton



AI Optimization

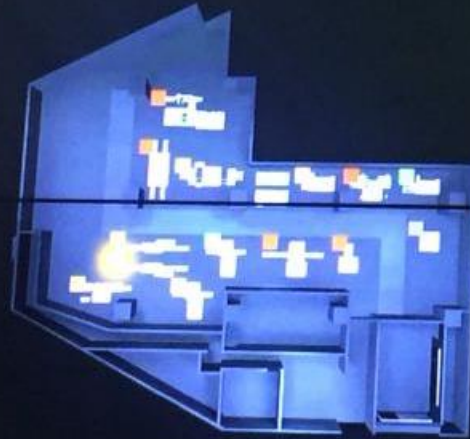


ENTERPRISE - PRODUCTION TRACKING

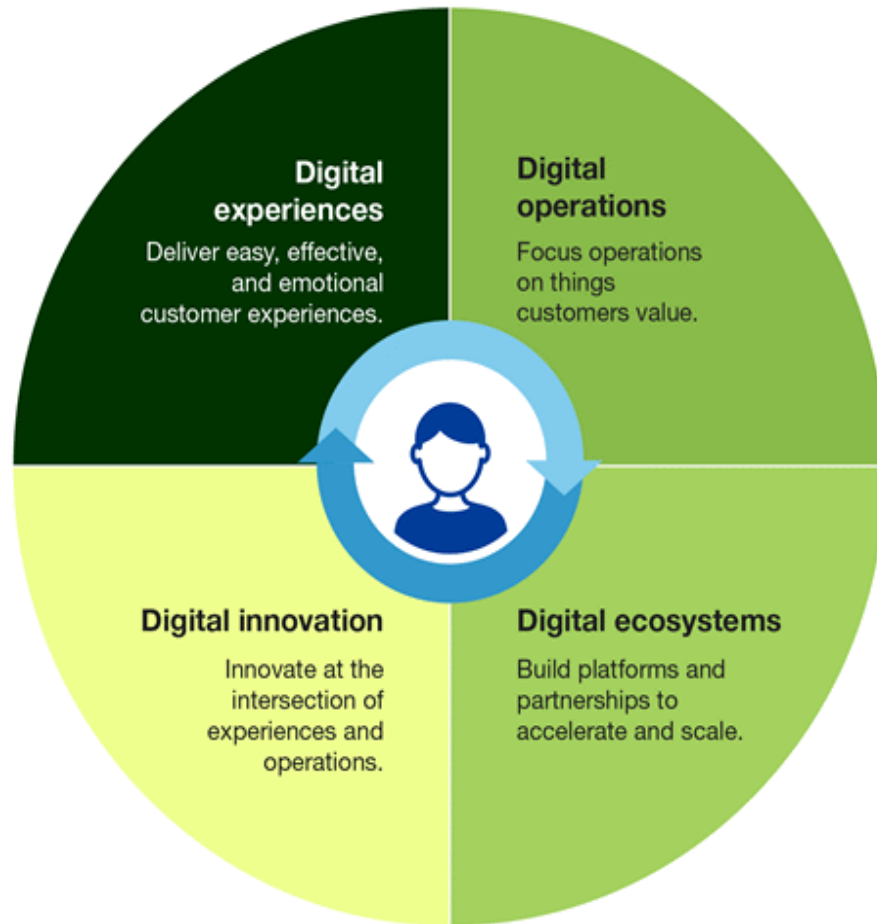
| ORDER NUMBER | CUSTOMER NAME | PROGRESS | LAST UPDATED |
|--------------|---------------|----------|--------------|
| E17-0004 | VIP CUSTOMER | 100% | 14:20 |
| E17-0002 | JIANG JIE | 100% | 09:51 |
| E17-0001 | SU WL | 100% | 09:25 |
| E16-0002 | JIANG JIE | 100% | 16:26 |
| E16-0001 | WANG LI | 100% | 11:57 |

| ORDER NUMBER | PROCESS NAME | PROGRESS | LAST UPDATED |
|--------------|------------------|----------|--------------|
| E17-0004/03 | LOWER CASE PRINT | 100% | 14:20 |
| E17-0004/02 | HOLDER ASSY | 100% | 14:20 |
| E17-0004/01 | SCENT FILLING | 100% | 14:16 |
| E17-0004/04 | LEAN PACKAGING | 100% | 12:54 |
| E17-0002/02 | LEAN PACKAGING | 100% | 09:51 |

SHOP FLOOR - RESOURCE TRACKING



The Game Changer – Your Digital Journey



REINVENT YOUR BUSINESS WITH TECHNOLOGY . . . OR FADE TO BLACK

Digital technology dramatically alters the balance of power between customers and companies. While customers gain the power of information and choice, digital technology also dramatically improves the economics of business.

Digital natives like Amazon, Netflix, Tesla, and Uber understand this. Their business paradigm focuses on using digital experiences to always deliver on rapidly evolving customer expectations and outcomes.

As Jeff Bezos, CEO of Amazon, says:

"You want to be customer obsessed, not competitor obsessed. Customers are always dissatisfied, and they always want more. If you're competitor obsessed and you're a leader, you see everyone behind you, and you slow down a bit. But customers pull you along."

<https://www.youtube.com/watch?v=ozLakIIFWUI>

DHL Smart WMS

Questions & Answer



IPO SG PTE LTD

35 Tannery Road
#02-07 Tannery Block
Singapore (347740)

DID: +65 67488727
www.ipo-sg.com

Samuel Ng
COO
Samuel.ng@ipo-sg.com